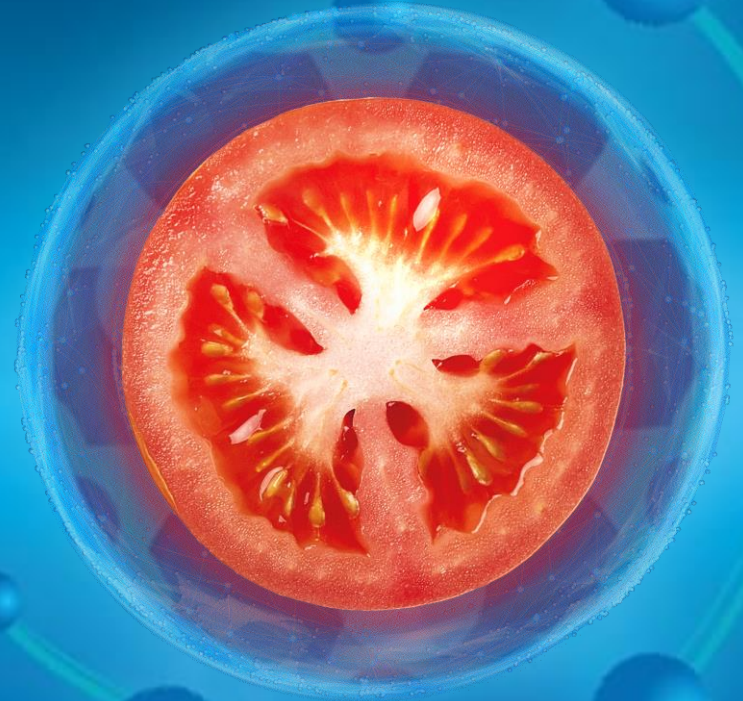


# INTELLIGENE® RANGE

SENSITIVE SKIN / HOMEOSTASIS

  
**Phenix®**  
en Provence



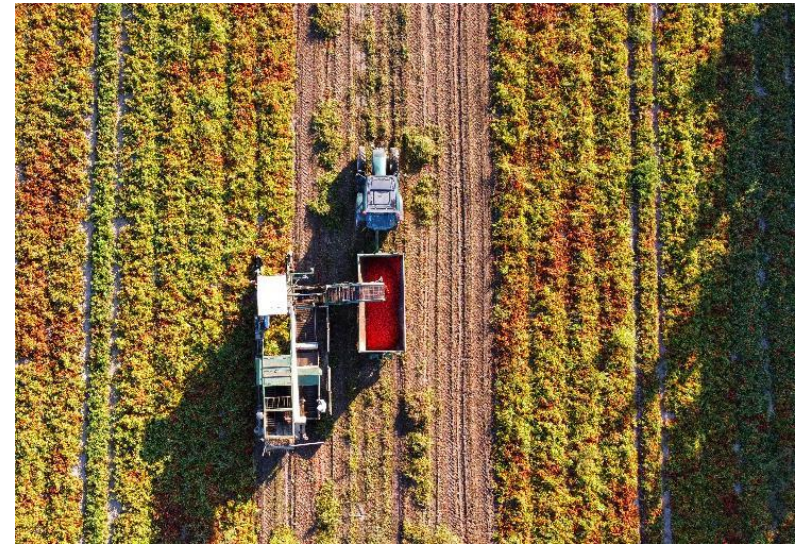
“ BEAUTY OF THE FUTURE ”

 **Sollice**  
BIOTECH



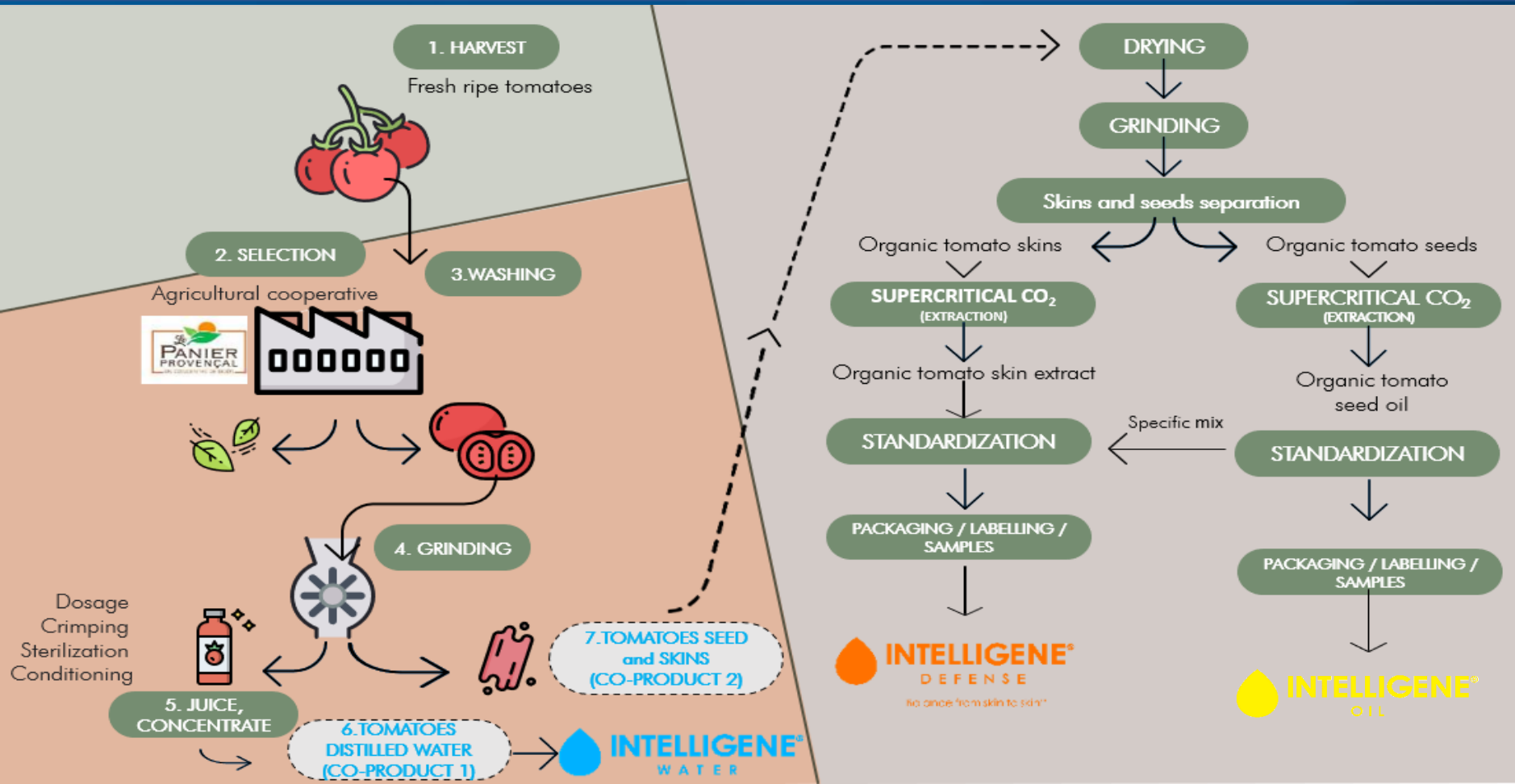
# ORIGIN

- In France, 160 000 T of tomatoes are produced in **Provence** where 14 000T are from **organic** farms (~80% of total organic French tomatoes).
- **Phenix en Provence** is a Joint-Venture between Inaturals and CAPL (Coopérative Agricole de Provence et Languedoc) that is producing and commercializing **INTELLIGENE® range, cosmetic ingredients** obtained from organic tomatoes co-products.
- It is an **exclusive** association between an R&D independent office and French farmers, promoting **science and a local and circular economy**.





# FABRICATION PROCESS







# INTELLIGENE INGREDIENTS

- The **INTELLIGENE**<sup>®</sup> range allows the skin to restore its balance, hydration and radiance
- 1 active ingredient
- 2 commodities

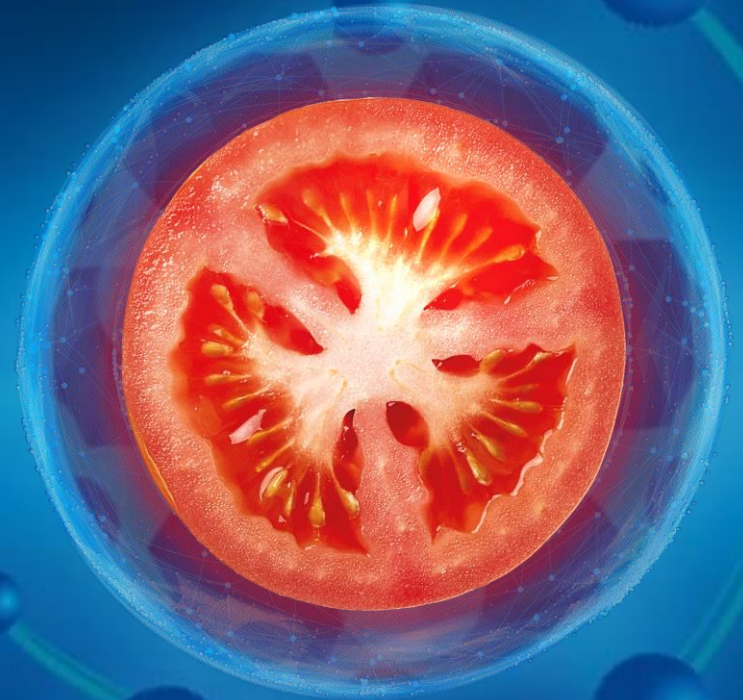


# INTELLIGENE<sup>®</sup> RANGE

SENSITIVE SKIN / HOMEOSTASIS



**INTELLIGENE<sup>®</sup>**  
WATER



“ BEAUTY OF THE FUTURE ”

# A UNIQUE COMPOSITION

Volatile compounds	Intelligene® Water ( $\mu\text{g/L}$ )	Odor thresholds ( $\mu\text{g/L}$ )	GC-olfactometry description
B-damascenone	1.25	0.002	Canned apple, peach, sweet, fruity
B-ionone	0.108	0.007	Violet, flowery, rose
Cis-hexen-3-ol	12.7	70	Grass, herbaceous, green
Trans-2-hexenal	17.9	17	Grass, herbaceous, green
Hexanal	0	4.5	Grass, tallow, fat
Hexanol	0	500	Fruity
Isopropyl acetate	0	1000	Fruity
Isobutyl acetate	0	150	Fruity
Ethyl butyrate	0	1	Fruity
Ethyl iso-butyrate	5	0.1	Fruity
Methyl salicylate	2	0.06	Green, peppermint
Eucalyptol	0	0.001	clove, sweet
Limonene	0	10	Lemon, orange
Linalool	5.6	6	Citrus, floral, grape-like, sweet
Nerol	4.6	300	Flower, grass, floral, green
Terpineol (sum of isomers)	3.5	330	Lilac, floral, sweet
2-Phenylethanol	500	1100	Rose, floral, honey

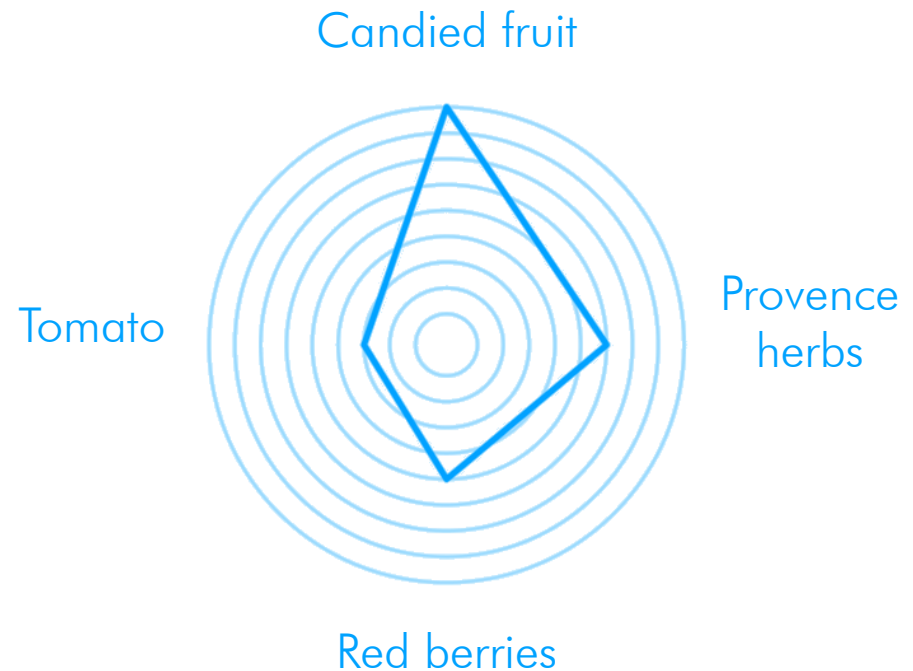
# AROMATIC DESCRIPTION

Aromatic compounds detected: C13-norisoprenoids

"**Candied, red fruits and acid sour notes** relatively smoky and fruity like kirsch cherries.

**Vegetal/green notes**, type herbs of Provence.

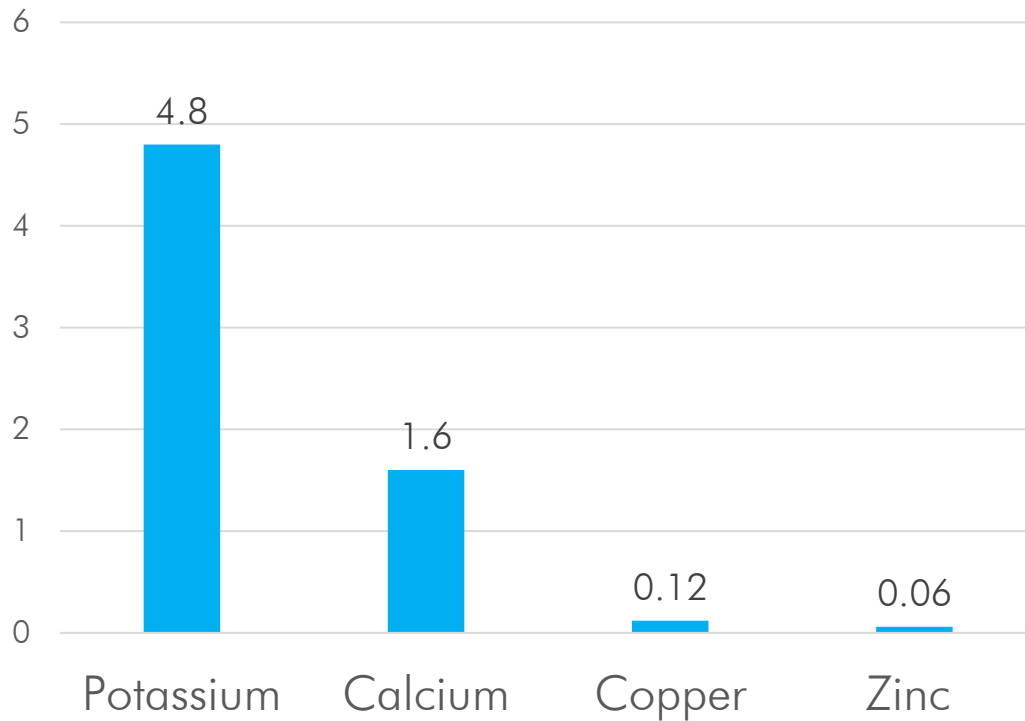
When blind, the perception of 'tomato' type notes is not obvious"





# MINERAL PROFILE

Mineral profile of Intelligene<sup>®</sup> Water (mg/L)



**INTELLIGENE<sup>®</sup> WATER** contains essential minerals necessary to maintain a balance on the skin's surface.



# NECESSARY DEFENSE

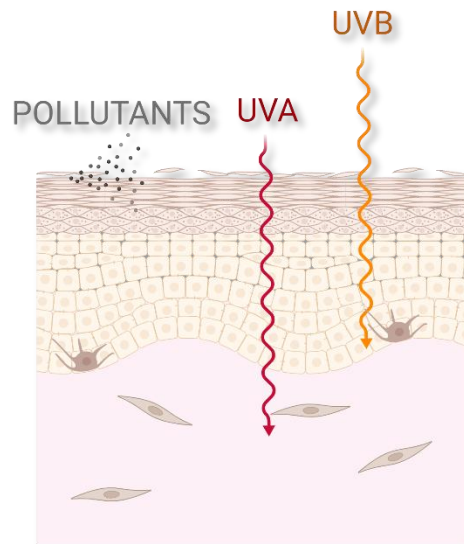
## EXPOSOME

### External factors

meteorological factors, solar radiation, pollution or tobacco smoke, cosmetics...

### Internal factors

unhealthy diet, hormonal variations, lack of sleep, psychosocial stress...

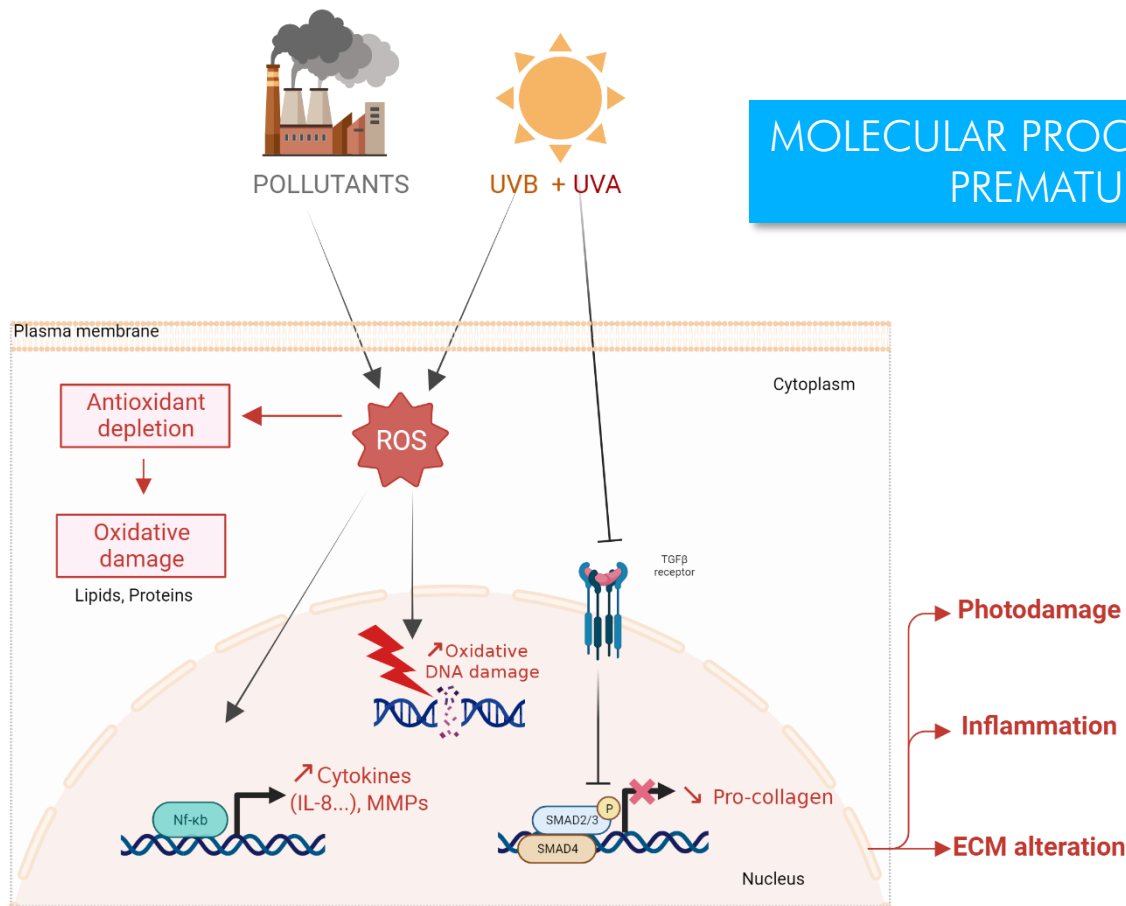


- Photoaging
- Dry skin
- Deep wrinkles
- Pigmentation disorders (dark spots)
- Uneven skin tone



# MECHANISM OF ACTION

## *In vitro*



MOLECULAR PROCESSES RESPONSIBLE FOR  
PREMATURE SKIN AGING



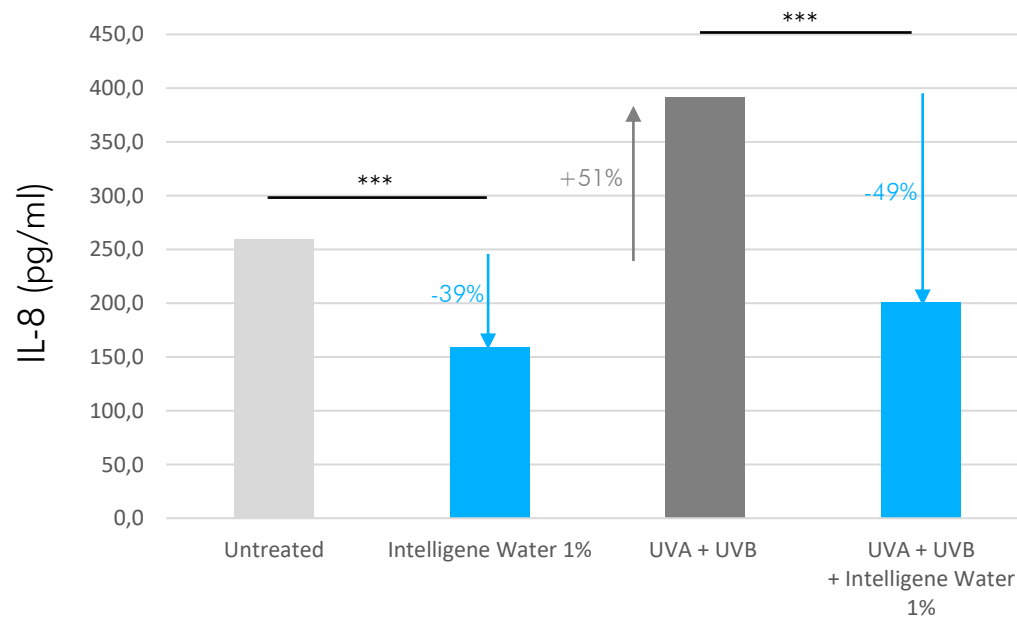
# BIOLOGICAL MECHANISM





# REGULATES INFLAMMATORY RESPONSE

**INTELLIGENE® WATER** inhibits the expression of IL8 a key mediator of skin inflammation including UV-induced inflammation.



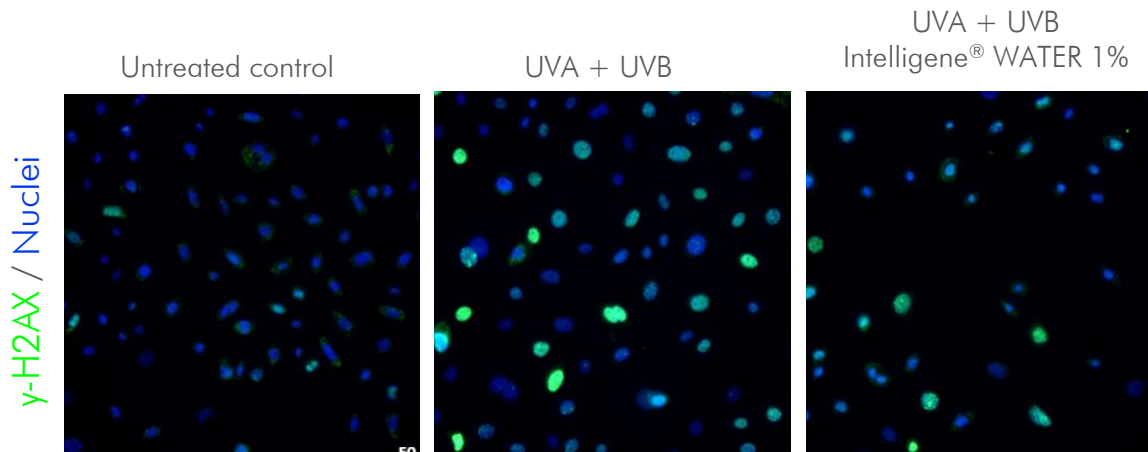
*NHEK exposed or not to UVA/UVB, treated or not with INTELLIGENE® WATER 1%  
ELISA analysis of IL-8 release in culture medium*



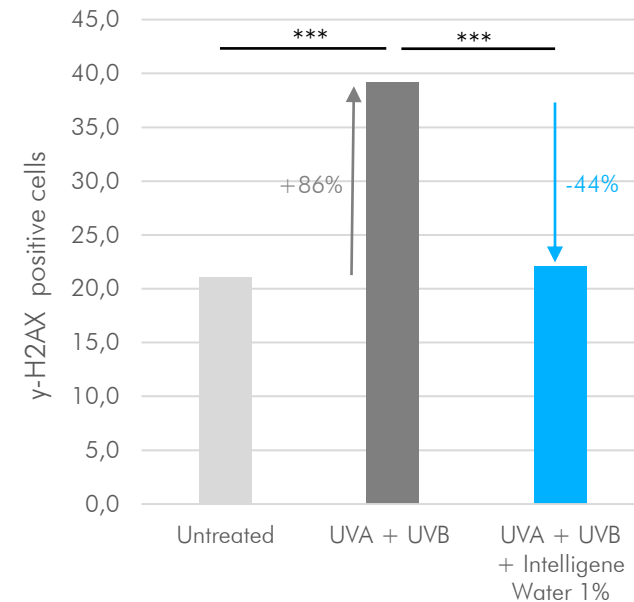


# PROTECTS CELLS FROM UV DAMAGES

**INTELLIGENE® WATER** protects skin cells from UV-induced DNA damages.  $\gamma$ H2AX, a biomarker of DNA double strand breaks, does not appear in cells.



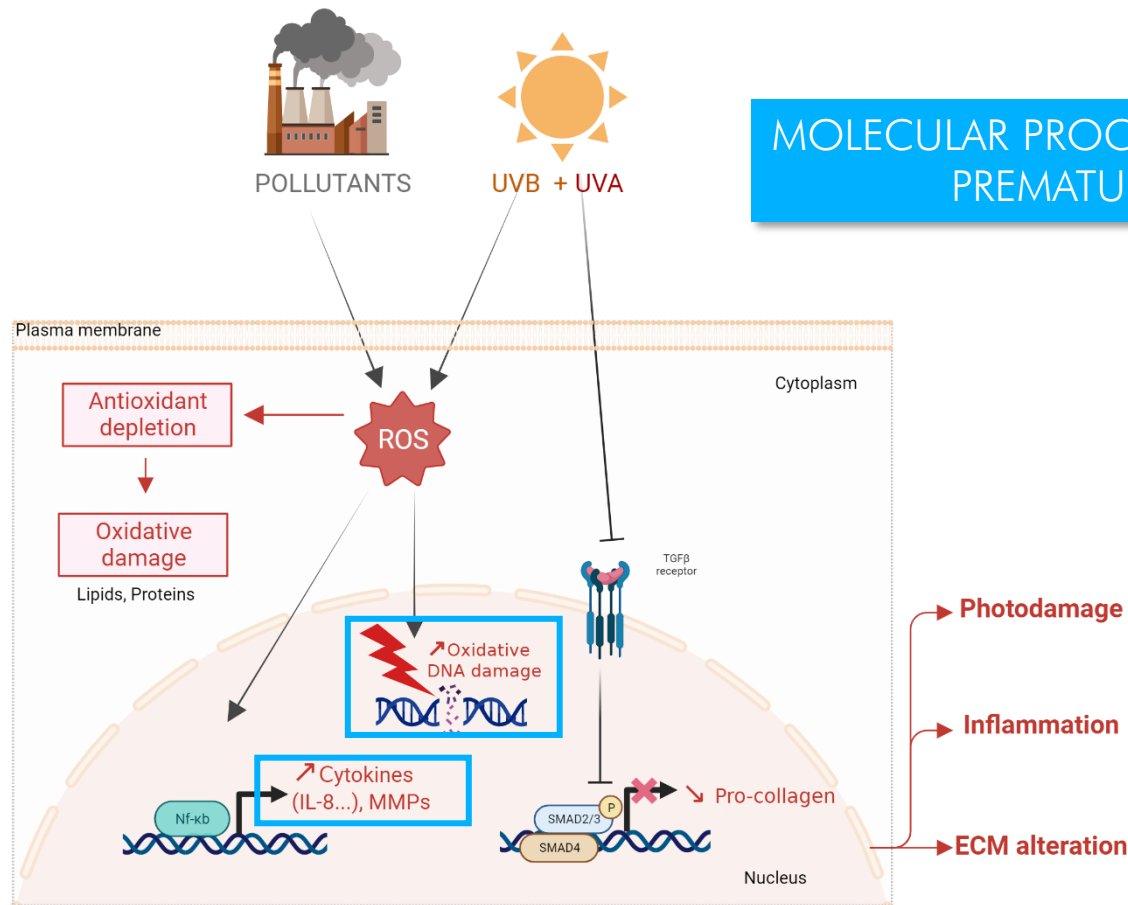
NHEK exposed to UVA/UVB, treated or not with INTELLIGENE® WATER 1%  
 $\gamma$ H2AX analysis by immunifluorescence



Barnes L, et al. Photochem Photobiol. 2010

# MECHANISM OF ACTION

## *In vitro*



MOLECULAR PROCESSES RESPONSIBLE FOR PREMATURE SKIN AGING

YOUTHFUL SKIN

# RESUME OF BIOLOGICAL ACTIVITIES

PROTECTS FROM MOLECULAR PROCESSES INDUCED  
BY ENVIRONMENTAL FACTORS

To limit premature skin aging

LIMITS INFLAMM'AGING

PROTECTS DNA



# TECHNICAL INFORMATION

INCI: *Solanum Lycopersicum* (Tomato) Fruit water

## APPLICATION

- Face care
- Body care

## DOSE OF USE

Up to 100%

## SOLUBILITY

Water Soluble

## ASPECT

Transparent to light pink liquid

## ODOR

Characteristic odor



INTELLIGENE® Water is a raw material verified by ECOCERT Greenlife, conform to the COSMOS standard.





# COSMETIC APPLICATION


- ALTERNATIVE FOR FRESH WATER
- SOOTHING
- PROTECTION FROM ENVIRONMENTAL FACTORS
- PREMATURE AGING
- PREVENTION OF DARK SPOTS FORMATION



# ORGANIC BOTANICAL CLEANSING AND ANTIAGING WATER

This fresh tomato water transports you directly to summer days in Provence by cleansing the face in a sunny veil with vegetal notes.

Its formula cleans sebum from your skin, removes makeup with a dewy touch, refreshes, remineralizes and protects from UV induced skin DNA damage after sun exposure in a single step thanks to INTELLIGENE® WATER.

INCI		%
<i>Solanum lycopersicum</i> (tomato) fruit water		85.0
Potassium sorbate		0.15
Sodium benzoate		0.15
Pentylene Glycol, Glycerin, Coconut Oil, Polyglyceryl-6 Esters, Caprylyl/Capryl Glucoside, Sodium Levulinate, Citric Acid, Parfum (Fragrance), Decyl Alcohol, Citronellol, Sodium Hydroxide		On request







# POST-SHAVE & ANTI-AGING BALM

To relieve irritation and combat UV damage, we've created a complete product combining INTELLIGENE® WATER and INTELLIGENE® OIL. They soothe and remineralize the skin, protecting it from DNA damage caused by UV rays after exposure to the sun.

In a single step, the balm moisturizes, preventing redness and tightness. Its light, plant-based fragrance provides a sensation of freshness after shaving.

INCI		%
<i>Solanum lycopersicum</i> (tomato) Fruit Water		59.0
<i>Solanum lycopersicum</i> (tomato) seed oil		3.0
C15-19 Alkane, Glycerin, C10-18 Triglycerides, Aqua (Water), Erythritol, Pentylene Glycol, Distarch Phosphate, Solanum Lycopersicum Seed Oil, Glyceryl Stearate, Glyceryl Stearate Citrate, Behenyl Alcohol, Glyceryl Behenate, Lecithin, Benzyl Alcohol, fragrance (Fragrance), Xanthan Gum, Glycine Soja Seed Extract,, Glyceryl Undecylenate, Citric Acid, Tocopherol, Sodium Phytate, Dehydroacetic Acid, Biosaccharide Gum-1, Sodium Hydroxide, Citronellol, Glyceryl Caprylate, Glycine Soja (Soybean) Oil, Levulinic Acid, Potassium Sorbate, Sodium Benzoate, Limonene, Linalool, Helianthus Annuus (Sunflower) Seed Oil, P-Anisic Acid, Geraniol		On request

